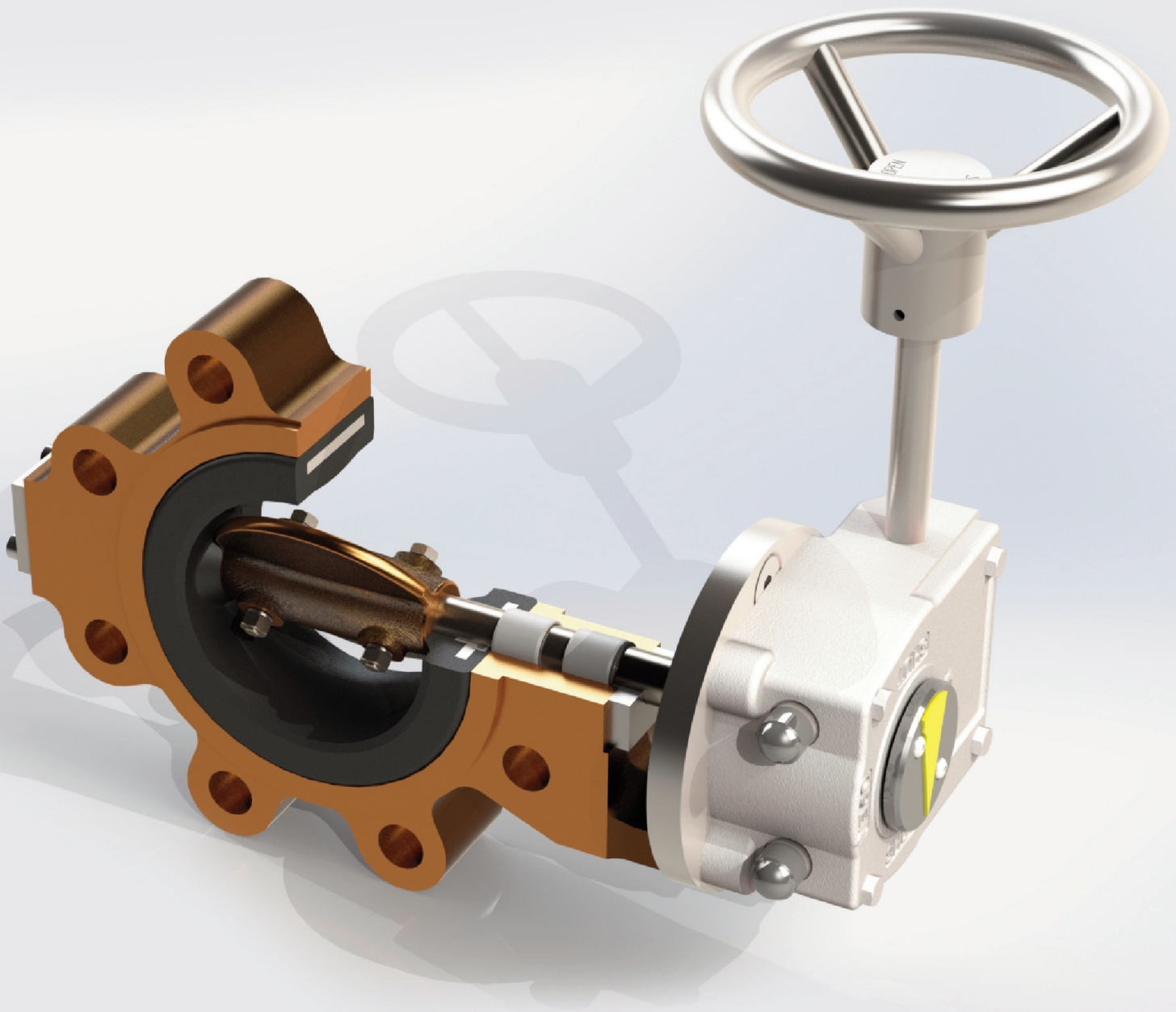




PERFORMANCE BUTTERFLY VALVES



Company Heritage

Throughout industries worldwide, one name stands out above all others for butterfly valve reliability and versatility - TOMOE.

Established in 1953 in Osaka, Japan with a single-minded commitment to research and development, TOMOE was quick to seize the lead in butterfly valve technology. It was a lead that saw the TOMOE butterfly valve range develop and flourish in home markets and throughout the world. Today, as in 1953, the name TOMOE can be found on only the finest, most reliable and broadest range of butterfly valves available.

From the first valve produced to today our innovations continue to meet the changing needs of the flow control industry.



CEO Message



It has been more than half a century since we developed our first Butterfly Valve in Japan.

The business which we have started from sales of rubber seated butterfly valve has progressively expanded and improved its range of products, to innovative rotary control valves that come with superior control ability and high performance valves which covers a wide range of pressures and temperatures.

With our solid foundation in technology and years of experience, I set the vision for the group to be committed and to continue to deliver reliable and trustworthy products that meet our customers' expectation.

As a result of globalization in every industrial sector, market demands become very specific, complicated, and localized.

Being a partner to our customers, we will continue to produce creative and innovative valves through our world-wide sales network.

Our challenges continue.
Akitoshi Yamamoto
Chairman & CEO



700G Rubber Lined Butterfly Valve

Size Range:	DN40 - DN600 (1½" - 24")
Pressure Rating:	16 bar
Body Patterns:	Wafer, (semi-lugged & lugged available)
Body Seat:	EPDM, HI-EPDM, NBR, FPM, SEP, White NBR
Body Materials:	Ductile Iron, WCB, 304SS
Disc Materials:	304 & 316 St.Steel, PPS, Alu Bronze, DAC coating
Temperature Rating:	-20°C to +150°C
Flange Standards:	ANSI125/150, PN10/PN16, JIS 5K/10K
Operation:	Manual, Electric, Pneumatic



700Z Aluminium Rubber Lined Butterfly Valve

Size Range:	DN40 - DN300 (1½" - 12")
Pressure Rating:	10 bar
Body Patterns:	Wafer
Body Seat:	EPDM, NBR
Body Materials:	Aluminium
Disc Materials:	316 St.Steel, PPS
Temperature Rating:	-20°C to +120°C
Flange Standards:	ANSI125/150, PN10/PN16, JIS 5K/10K
Operation:	Manual, Electric, Pneumatic



300 Series Double Offset Butterfly Valve

Size Range:	DN40 - DN300 (1½" - 12")
Pressure Rating:	20 bar
Body Patterns:	Wafer
Body Seat:	RPTFE, 316SS
Body Materials:	Ductile Iron, 304SS
Disc Materials:	304SS
Temperature Rating:	-20°C to +250°C
Flange Standards:	ANSI125, 150, PN6,10, 16, JIS 5K, 10K, 16K, 20K
Operation:	Manual, Electric, Pneumatic



508V Control Butterfly Valve

Size Range:	DN50 – DN600 (2" - 24")
Pressure Rating:	10 bar
Body Patterns:	Wafer
Body Seat:	EPDM, NBR
Body Materials:	SG Iron
Disc Materials:	304SS, 316SS
Temperature Rating:	-20°C to +120°C
Flange Standards:	ANSI150, PN10, PN16, JIS 10K, JIS 16K
Operation:	Manual, Electric, Pneumatic



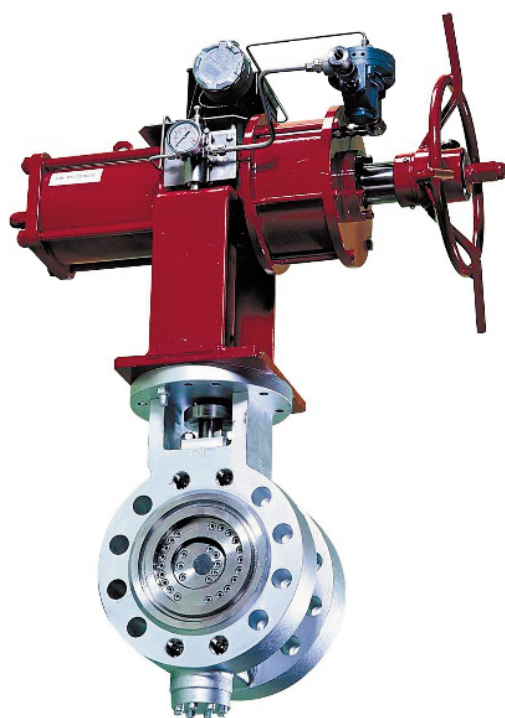
731X Rubber Lined Butterfly Valve

Size Range:	DN50 - DN600 (2" - 24")
Pressure Rating:	20 bar
Body Patterns:	Wafer, Lugged
Body Seat:	EPDM, NBR
Body Materials:	Alu Bronze, WCB, 316SS, Duplex
Disc Materials:	316SS, Alu Bronze
Temperature Rating:	-20°C to +120°C
Flange Standards:	ANSI150, PN16
Operation:	Manual, Electric, Pneumatic



TT2 Triple Offset Butterfly Valve

Size Range:	DN50 – DN600 (2" - 24")
Pressure Rating:	Class 150, Class 300
Body Patterns:	Wafer, Lugged, DFSP, DFLP
Body Seat:	Graphite Laminate
Body Materials:	WCB, 316SS
Disc Materials:	WCB, 316SS
Temperature Rating:	-29°C to +600°C
Flange Standards:	ANSI125/150, PN10/PN16, JIS 5K/10K
Operation:	Manual, Electric, Pneumatic, Hydraulic



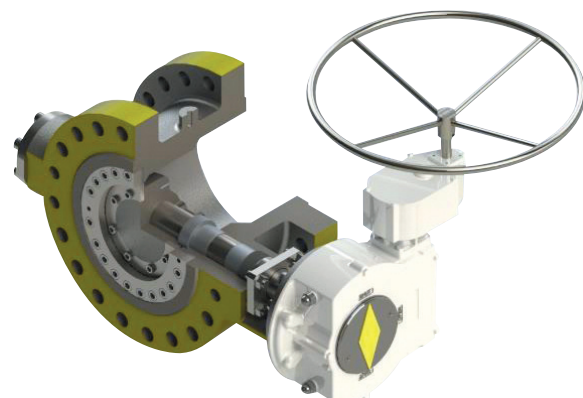
TT1 Triple Offset Butterfly Valve

Size Range:	DN50 – DN1650 (2" - 60")
Pressure Rating:	Class 150 – Class 2500
Body Patterns:	Wafer, Lugged, DFSP, DFLP, Hub, etc
Body Seat:	316SS, Graphite
Body Materials:	WCB, 316, Monel, Hastelloy, Inconel, Duplex etc.
Disc Materials:	WCB, 316, Monel, Hastelloy, Inconel, Duplex etc.
Temperature Rating:	-46°C to +850°C
Flange Standards:	All
Operation:	Manual, Electric, Pneumatic, Hydraulic



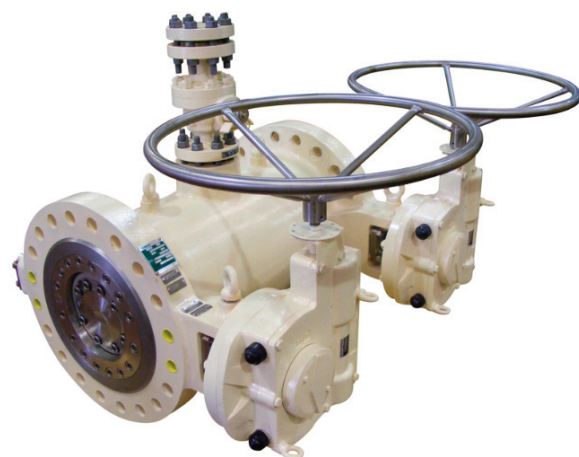
HF Acid Triple Offset Butterfly Valve

Size Range:	DN80 – DN600 (3" - 24")
Pressure Rating:	Class 300
Body Patterns:	DFLP, DFSP, Lugged
Body Seat:	Monel/Graphite laminate
Body Materials:	Monel
Disc Materials:	Monel
Flange Standards:	ASME 16.5
Operation:	Manual, Electric, Pneumatic



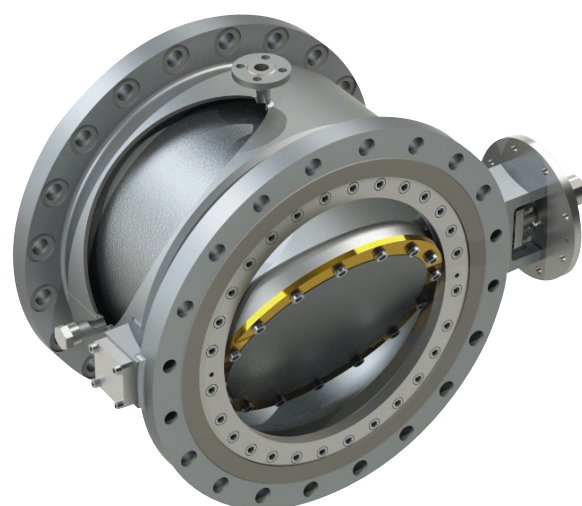
Double Block & Bleed Triple Offset Butterfly Valve

Size Range:	DN50 – DN1200 (2" - 48")
Pressure Rating:	Class 150 – Class 2500
Body Patterns:	Wafer, Lugged, DFSP, DFLP, BWE, Hub, etc
Body Seat:	316SS/Graphite
Body Materials:	WCB, 316, Duplex, Monel, Hastelloy, Inconel, etc
Disc Materials:	WCB, 316, Duplex, Monel, Hastelloy, Inconel, etc
Temperature Rating:	-46°C to +850°C
Flange Standards:	ANSI, PN, JIS
Operation:	Manual, Electric, Pneumatic, Hydraulic



Steam Jacketed Triple Offset Butterfly Valve

Size Range:	DN100 – DN1500 (1½" - 60")
Pressure Rating:	Class 150 – Class 2500
Body Patterns:	Wafer, DFSP, DFLP
Body Seat:	316SS/Graphite
Body Materials:	WCB, 316SS
Disc Materials:	WCB, 316SS
Temperature Rating:	-46°C to +850°C
Flange Standards:	ANSI, PN, JIS
Operation:	Manual, Electric, Pneumatic, Hydraulic





TOMOE valves can be found in operation in a vast range of industries worldwide, both on-shore and off-shore, providing unsurpassed levels of leak tightness and wear resistance and making a valuable contribution to overall process efficiency.



Tomoe Valve Limited

Clearwater Rd, Queensway Meadows Industrial Estate,
Newport, South Wales, NP19 4ST, U.K.

Tel: +44 (0) 1633 636800

Email: sales@tomoe.co.uk

www.tomoeurope.com

TOMOE

www.tomoeurope.com