



## DATA SHEET

Product Data Sheet No : SD/PD/010 Rev 1  
Title : Valve General specifications

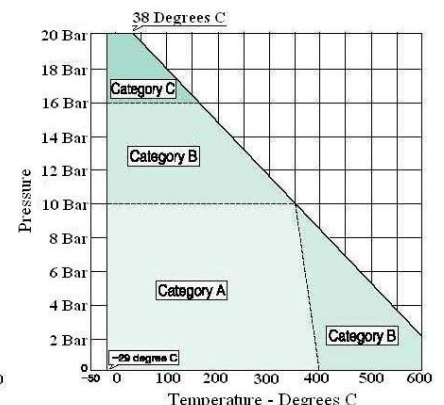
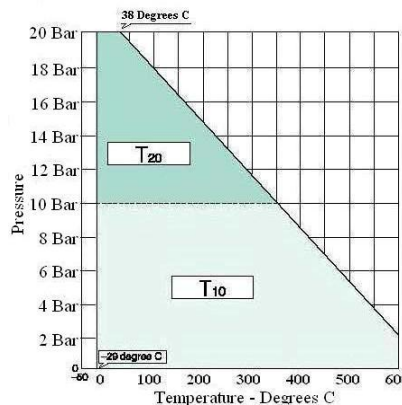
Product : 302A (Wafer) Valve  
Date : 5<sup>th</sup> April 2012

Valve Nominal Size		80mm to 150mm	150mm to 300mm	350mm to 600mm	
Applicable Flange Standards		JIS 10K/16K/20K ANSI125lb/150lb API/JPI 150lb BS 10 Table 'F' BS EN 1092 PN10/PN16 (Replaces BS 4504)		JIS 5K/10K/16K/20K ANSI125lb/150lb API/JPI 150lb BS EN 1092 PN10/PN16 (Replaces BS 4504)	
Maximum Working Pressure				20 Barg	
Body Shell Test				30 Barg	
Seat Leak Test				22 Barg	
Working Temperature Ranges		-29°C to +600°C (Extension bonnet required at +400°C and over)			
Standard Materials	Body	Carbon Steel SCPH2-WCB Stainless Steel 316 JIS SCS14A		Carbon Steel SCPH2-WCB Stainless Steel 304 JIS SCS13A Stainless Steel 316 JIS SCS14A	
	Disc	Stainless Steel 316 JIS SCS16A	Stainless Steel 316 JIS SCS14A	Stainless Steel 304 JIS SCS13A Stainless Steel 316 JIS SCS14A	
	Stem	SUS420J2, SUS392J1, SUS316, SUS329J4L			
	Seat Ring	SUS316L Hard facing treatment			
Paint Coating		Silicon Resin Coating (Grey Munsell N7) for lower than +200°C Heat Resistant Silver Coating for above +200°C No paint for Stainless Steel Body			
Actuators	Lock Lever	√	X	X	X
	Worm Gear	√	√	√	√
	Pneumatic cylinder	√	√	√	√
	Motorized	√	√	√	√
Typical Valve Service		General hydrocarbon, chemical process, low pressure steam and gas applications.			
Pressure Equipment Directive 97/23/EC Category		Under it's extreme operating conditions the 302A Valve is deemed to be Category III.			

### 302A Basic Torque Figures

Nominal Size		Basic Torque (Nm)		Nominal Size		Basic Torque (Nm)		
mm	inch	T10	T20	mm	inch	Category A	Category B	Category C
80	3	32	65	350	14	750	950	1100
100	4	49	82	400	16	900	1250	1500
125	5	69	118	450	18	1200	1600	1900
150	6	127	176	500	20	1800	2350	2550
200	8	225	392	600	24	2300	3000	3500
250	10	323	510	Note : T10/T20 and Categories A, B & C can be found on Pressure-Temperature chart below.				
300	12	441	735					

Actuators	Required torque for actuator selection
Manual operators	Basic torque + 30%
Pneumatic cylinder	Basic torque + 50%
Motorized	Basic torque + 100%
Note : In case of pneumatic cylinder with manual operation unit, the selection of manual operation unit shall be based on basic torque + 50%	





## DATA SHEET

Product Data Sheet No : SD/PD/010 Rev 1  
Title : Valve General specifications

Product : 302A (Wafer) Valve  
Date : 5<sup>th</sup> April 2012

### 302A Valve Dimensions

Nominal Size		Dimensions (mm)														Approx Weight (Kg)
mm	inch	Ød	ØD	L	L2	H1	H2	H3	Ød2	□S1	a2	a3	t	□S	C1	
80	3	89	127	48	22	95	147	52.5	16	14	16.5	36	15	102	72	5
<b>100</b>	<b>4</b>	<b>112</b>	<b>156</b>	<b>54</b>	<b>24</b>	<b>110</b>	<b>170</b>	<b>52.5</b>	<b>16</b>	<b>16</b>	<b>16.5</b>	<b>36</b>	<b>15</b>	<b>102</b>	<b>72</b>	<b>6.2</b>
125	5	137	185	56	23	139	185	52.5	20	18	16.5	36	15	102	72	9.3
<b>150</b>	<b>6</b>	<b>163</b>	<b>216</b>	<b>57</b>	<b>23.5</b>	<b>164</b>	<b>205</b>	<b>52.5</b>	<b>22</b>	<b>24</b>	<b>20</b>	<b>35.5</b>	<b>15</b>	<b>125</b>	<b>88.4</b>	<b>12.5</b>
200	8	213	269	64	27	190	235	63	28	-	30	33	15	125	88.4	19
<b>250</b>	<b>10</b>	<b>236</b>	<b>330</b>	<b>71</b>	<b>31</b>	<b>236</b>	<b>283</b>	<b>108</b>	<b>32</b>	-	<b>65.3</b>	-	<b>18</b>	<b>140</b>	<b>99</b>	<b>33</b>
300	12	315	381	81	35	246	310	113	35	-	35	-	18	140	99	42
<b>350</b>	<b>14</b>	<b>350</b>	<b>416</b>	<b>92</b>	<b>39.5</b>	<b>308</b>	<b>340</b>	<b>113</b>	<b>38</b>	-	<b>70</b>	-	<b>18</b>	<b>140</b>	<b>99</b>	<b>61</b>
400	16	400	475	102	39	348	372	113	42	-	70	-	18	140	99	88
<b>450</b>	<b>18</b>	<b>450</b>	<b>534</b>	<b>114</b>	<b>43</b>	<b>366</b>	<b>406</b>	<b>141.5</b>	<b>45</b>	-	<b>60</b>	-	<b>20</b>	<b>165</b>	<b>165</b>	<b>135</b>
500	20	500	589	127	50	405	442	141.5	49	-	70	-	20	165	165	173
<b>600</b>	<b>24</b>	<b>600</b>	<b>693</b>	<b>154</b>	<b>64</b>	<b>461</b>	<b>493</b>	<b>141.5</b>	<b>59</b>	-	<b>70</b>	-	<b>20</b>	<b>165</b>	<b>165</b>	<b>272</b>

